

Frederick County Beekeeping Association



Vol. 3, Issue 3

www.frederickbees.org

September 2017

CALENDAR

CMBA Meeting September 5

Cybil Preston, Chief Apiary Inspector for the State of Maryland, speaks about her experiences with Mack, her canine partner who sniffs out foulbrood. Mack and their new trainee will also be in attendance.

Mother Earth News Fair

Seven Springs PA
September 15-17

Great Frederick Fair

Frederick MD
September 15-28

Maryland State Beekeepers Association Fall Meeting

Elections and Honey Show,
November 4, 2017,
8:00 AM to 4:00 PM MDA, 50
Harry S Truman Parkway

FCC Students Visit CTC Apiary with Dave Maloney



Recently, FCC Asst. Prof. Christine Rai and 19 FCC students visited the Career and Technology Center's apiary in Frederick to learn from beekeeper Dave Maloney more about the honey bee and the critical role bees play in our food system.

In the past, Prof. Rai has taken students to Dave's home-based apiary, but now the students take advantage of the CTC's newly-established apiary which is located on the FCC campus. In the photo above, participating students are joined by Dave Maloney (far right).

Next Meeting September 6, 2017

69 Thomas Johnson Drive



Our State Apiary Inspector Cybil Preston and certified AFB dog Mack

Please register your hive and consider donating to the **Apiary Inspectors Fund**.

Office of Apiary Inspector
Md. Dept. of Agriculture
50 Harry S Truman - Annapolis,
Md. 21401
(410) 562 3434

[Click here](#) to download
registration application

In this issue. . .

Upcoming Speakers
Committee News
Vineyards & Honeybees

Honeybees & Eclipse
FCBA Favorite Sites

Recipes
News & Resources

Committee News

2017 Officers:

President: Liz Baker

Vice President: Wes Bowen

Treasurer: Bill Conyers

Secretary: Deb Turnell

Members at large: David Muns
& Darlene Donaldson

Director of Membership Relations:
Dave Maloney

Outreach Committee

Fair is coming up! Check your emails to sign up for shifts.

Science Committee Upcoming Speakers

October - Jeremy Barnes: "Beekeeping in Slovenia"

November - Allen Hayes: "Gadgets you could keep bees without, but won't want to"

December- Annual Holiday party and honey tasting

Newsletter Committee

FCBA Newsletter published electronically
March, June, September, December

Submissions for content welcome any time.

FCBA shirts, caps and sweatshirts are available to order on-line at:

<http://mkrdesigns.logoshop.com/>

When you get to the website search FCBA for items available with the logo.

If you have any questions contact:
Mary Riesch MKR Designs

301-271-2696
mkrdesigns@aol.com

October Speaker— Jeremy Barnes

OCTOBER 4, 2017

October's meeting will take us to Slovenia

Slovenia, once the Duchy of Carniola in the Austrian Empire and then part of Yugoslavia, is a beautiful essentially rural country, with a complex history, through which has run the consistent theme of beekeeping and is the home to the **Carniolan bee** (no other bees are allowed in Slovenia.)



Slovenia's history of beekeeping stretches back at least 1000 years, and has the largest ratio of beekeepers per population in the world.

The presentation will provide a brief introduction to the country itself before focusing on some of the beekeepers and their beautiful bee houses and ends with an experiment that Jeremy is conducting based on the Slovenian experience.

INTRODUCING OUR SPEAKER, JEREMY BARNES

The Majority of Jeremy's life was spent in Africa, where the most frequent contact with bees was throwing himself flat on the ground (ie. cricket field) as a swarm of African bees flew 4' above the ground. He came to the US in 1991 and his passion for education quickly was accompanied by a passion for honey bees. Currently he runs about 20 colonies, and is actively involved in the York and Pennsylvania associations, and has been blessed to spend time with beekeepers in England Wales, France, Kenya and Slovenia.



<http://honeybeewhisperer.simplesite.com>



November Speaker— Allen Hayes:

**"Gadgets you could keep bees without,
but won't want to"**

Why Biodynamic Vineyards Keep Bees

By: Nick Hines@nickolaushines

How Vineyards Became Homes for Bees

The story of the bees and the grapes goes back to the early 1900s and **Rudolf Steiner**, an Austrian philosopher and scientist who is the father of biodynamics. People who adhere to biodynamics are people who take “a spiritual-ethical-ecological approach to agriculture, gardens, food production and nutrition.” For vineyard owners, that means using natural growing techniques and bringing in a variety of animals to make an entire sustainable ecosystem.

Steiner gave a series of nine lectures on the importance of bees and the beehive to the ecosystem. The lectures are about “the unconscious wisdom contained in the beehive” and how the beehive “relates to the human experiences of health, civilization, and the cosmos,” according to the Rudolf Steiner Archive.

That love of bees translates to organic and biodynamic vineyard owners today, but bees aren’t necessarily required for grape production.

Click [Here](#) to read complete article.

Did honey bees get caught out at the flowers when the eclipse passed over OSU campus?

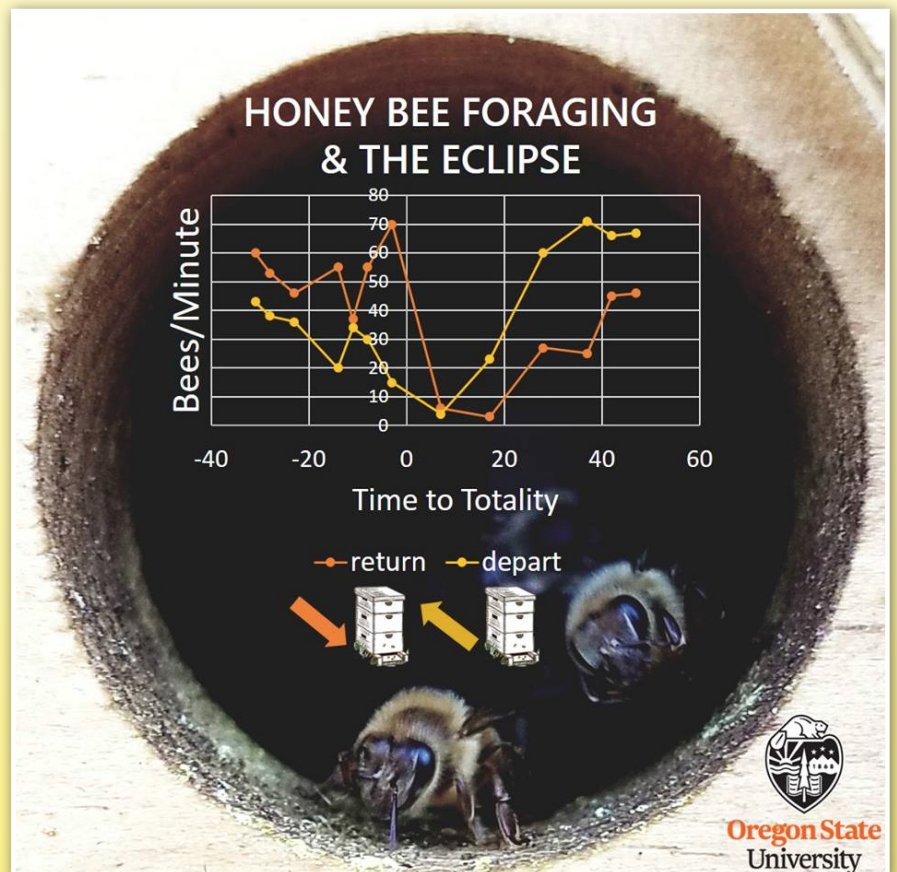
Oregon State University

Our observation at our campus apiary in Corvallis suggests they made it back home.

Just before totality the rate of bees returning to the hive spiked (70 bees per minute - darker orange line) and after the light returned there weren't a lot of bees returning (i.e., what you would expect if they got stuck), but a lot eager to get back to work (yellow line - bees departing).

Oddly, just as totality hit there were a lot of bees on the ground outside the hive who seemed unable to orient to the entrance. But this was temporary and all these bees piled back into the colony after the light returned.

So, honey bees seems very sensitive to changes in light and/or temperature associated with the eclipse and were anxious to head home when things got weird. Too bad for them, it was a spectacular eclipse!



Check out some FCBA members favorite sites . . .



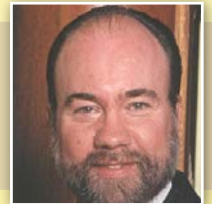
Darlene Donaldson likes:
Rockbridge Trees: Trees for Bees

Deb Turnell likes:
***The Honeybee Conservancy
(Bee Village - The Battery)***

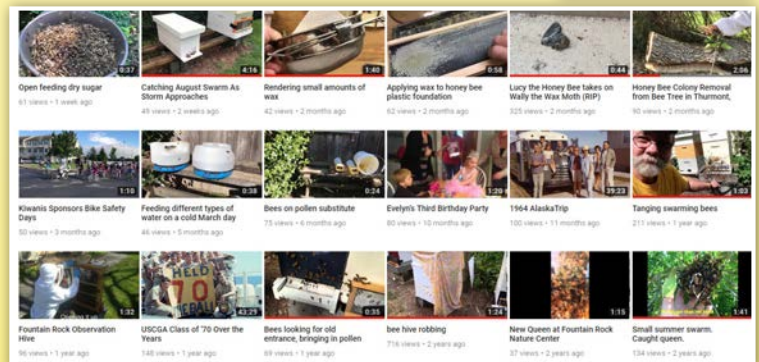


John Giffin likes:
Honeybee Suite

Jens Anderson likes:
Dave Maloney Youtube Channel



Chris & Mark Cannon like:
Beesource



Recipes using Honey . . .

Lavender Honey Lemonade

Ingredients

- 1 cup honey
- 5 cups water
- 1 tablespoon dried culinary lavender (or 1/4 cup fresh lavender blossoms)
- 1 cup fresh-squeezed lemon juice, strained
- Ice cubes
- Lavender sprigs for garnish

Directions

1. Combine honey with 2 1/2 cups water in a medium pan. Bring to a boil over medium heat, stirring to dissolve the honey.
2. Add the lavender to the honey water, cover, and remove from heat. Let stand at least 20 minutes (and up to several hours).
3. Strain mixture and discard lavender. Pour infusion into a glass pitcher. Add lemon juice and another 2 1/2 cups of cold water. Stir well.
4. Refrigerate until ready to use, or pour into tall glasses half-filled with ice, then garnish with lavender sprigs.



Chocolate Zucchini Bread

Ingredients

- 3eggs
- 1/2 cup butter softened
- 1/2 cup mashed banana
- 1/4 cup honey
- 1/2 cup brown sugar
- 1 tablespoon vanilla
- 2 cups grated zucchini (pack it tight)
- 2 2/3 cups whole wheat pastry flour
- 1/2 cup unsweetened cocoa powder
- 1 teaspoon salt
- 1 teaspoon cinnamon
- 1 teaspoon baking soda
- 1/2 teaspoon baking powder

Directions

1. Preheat oven to 350 degrees. Butter two loaf pans and set aside.
2. Beat together the eggs, butter, mashed banana, honey, brown sugar and vanilla. Once integrated, stir shredded zucchini into the wet ingredients.
3. In another bowl, combine flour, cocoa powder, salt, cinnamon and baking powder. Gently whisk until fully integrated.
4. Add the dry ingredient to the wet in three batches, stirring well to integrate before adding more.
5. Once batter is mixed, divide it equally between the two prepared pans.
6. Bake for 60-75 minutes, until the loaves are baked through and a toothpick comes out clean.
7. Eat within 3-4 days or wrap in several layers of plastic and freeze.



News & Resources

Organic and Neo-Nic-free seeds, plants and trees

Niche Gardens

Southern Exposure Seed Exposure

Ernst Conservation Seeds

High Mowing Organic Seeds
(seed packets also sold at Wegmans)

Prairie Moon Nursery

Pollinator-Friendly Seeds and Nursery Directory:
Growing plants to protect managed and wild bees,
butterflies, birds and other pollinators



And we should always remember that, in matters of evolution, nature will select for the ability to adapt and survive, not for maximum convenience to mankind.

– Phil Chandler, The Barefoot Beekeeper

Photo: Debra Turnell

The Sapsucker, the Maple Tree, and the Honeybee

The Sapsucker the Maple tree and the Honeybees are friends in winter.

The Yellow Bellied Sapsucker is a shy but common woodpecker in the eastern U.S. Their habit is to drill shallow holes in horizontal lines on medium to large hardwood trees. These shallow holes in most trees become hiding places for insects. The Sapsucker returns and has dinner already waiting. The holes drilled in Maple trees in winter are deep enough to allow the sap to run on days where the temperature is below freezing at night and above freezing during the day.

This running sap is where the benefit to bees begins. Honeybees will stir during winter on days when sunshine and temperature allow. Their desire is to begin to forage which is a futile venture if the snow still covers the ground. But the running sap on the Maple trees is an excellent source of sugar for those foraging bees. There may not be enough there to make a honey crop but, there may be enough to balance out the energy used during these winter excursions.

Having some maple trees nearby the hives is an added bonus to the routine winter activities of warm winter days.

Read the complete article from
"Farmer Dave" on Rockbridgetrees.com



Photos: Yellow-Bellied Sapsucker: National Zoo-Smithsonian Institution; Honeybees on tree: Rockbridgetrees.com; Maple tree: pixabay.com

OFFICERS

PRESIDENT: Liz Baker (lizbaker99@hotmail.com)

PRESIDENT ELECT: Wes Bowen (wes@wesandbeth.com)

SECRETARY: Deb Turnell (dturnell08@gmail.com)

TREASURER: Bill Conyers (bill.conyers@ymail.com)

IMMED. PAST PRES. Joe O'Connell
(joconnell624@yahoo.com)

WEBMASTERS: Jens Andersen
(poguemahonefarm@gmail.com)

NEWSLETTER: Deb Turnell (dturnell08@gmail.com)